

Emergency Response



Emergency Response Training



Emergency Response Training will equip your personnel with the skills required to act as a fire warden during an emergency. workplace emergency.



By selecting an appropriate number of fire wardens and conducting regular fire warden training, your organisation will ensure that your personnel are ready to deal with any workplace emergency.

Emergency Response Training



This training module has been prepared to provide an awareness of the roles and duties of Fire/Evacuation Wardens.

The material is generic in nature and can be applied in all situations.

For information specific to your workplace, refer to the following documents:

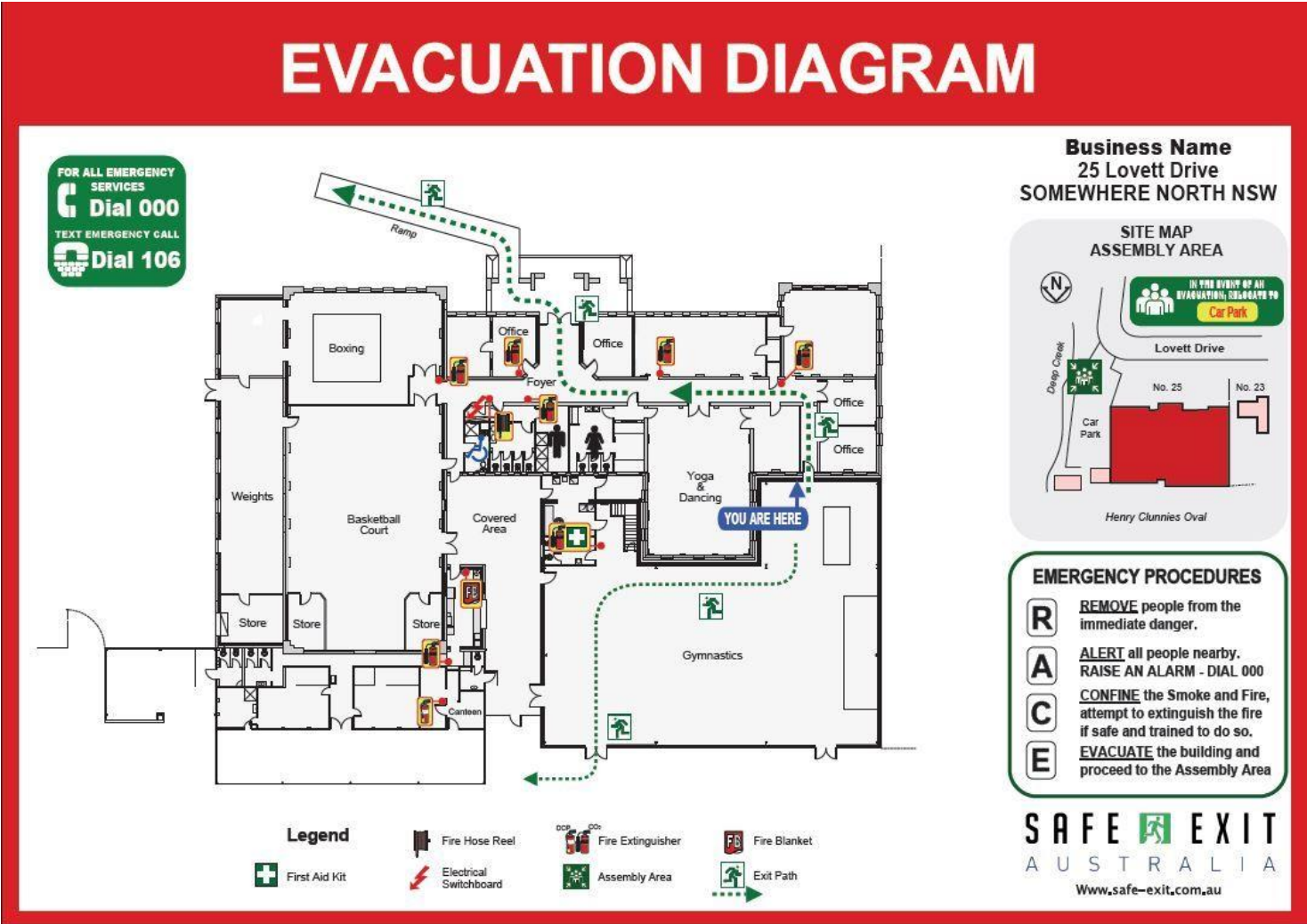
- **Emergency Management Plans**
- **Site Evacuation Plans**

These documents are generally referenced in Site Inductions



All occupants should make themselves familiar with:

- The emergency evacuation procedures for their building,
- The location of fire exits, and
- The operation of fire fighting and emergency equipment.





If you hear the alert mode of the fire alarm or when instructed to evacuate by the Emergency or area warden:

Walk quietly but quickly to the nearest exit and proceed to the assembly point outside the building to await further instructions.



Listen and follow instructions from the area wardens.

In the Case of Fire or Emergency



Sound the fire alarm system. (if there is a break glass alarm)

Notify the appropriate emergency service contact number for your site (**On most sites this is 000**)

- Details of location, type and scale of the emergency, and
- The name and location of the caller.

Alert other people in the vicinity and notify the Emergency Warden.

If it is safe to do so, use the appropriate fire extinguisher to put out the fire. (do not attempt to fight a fire if the fire is large or if you are not familiar with the use of the fire extinguisher)



In order to prevent injury and possible panic during an evacuation:

Do not run, push, or overtake.

Use stairs – DO NOT use lifts.

Do not return to your desk, office or room until advised.

Do not return to your building until the “all clear” is given by the building warden or fire service.

Types of Emergencies

- Fire or Explosion
- Bomb Threats
- Gas Leak / Chemical & Radiation Emergencies
- Ventilation System Contamination
- Natural Disaster (Earthquake, Storm Damage, Flood Damage)
- Fire in Adjacent Building
- Civil Disorder
- Order by Emergency Services

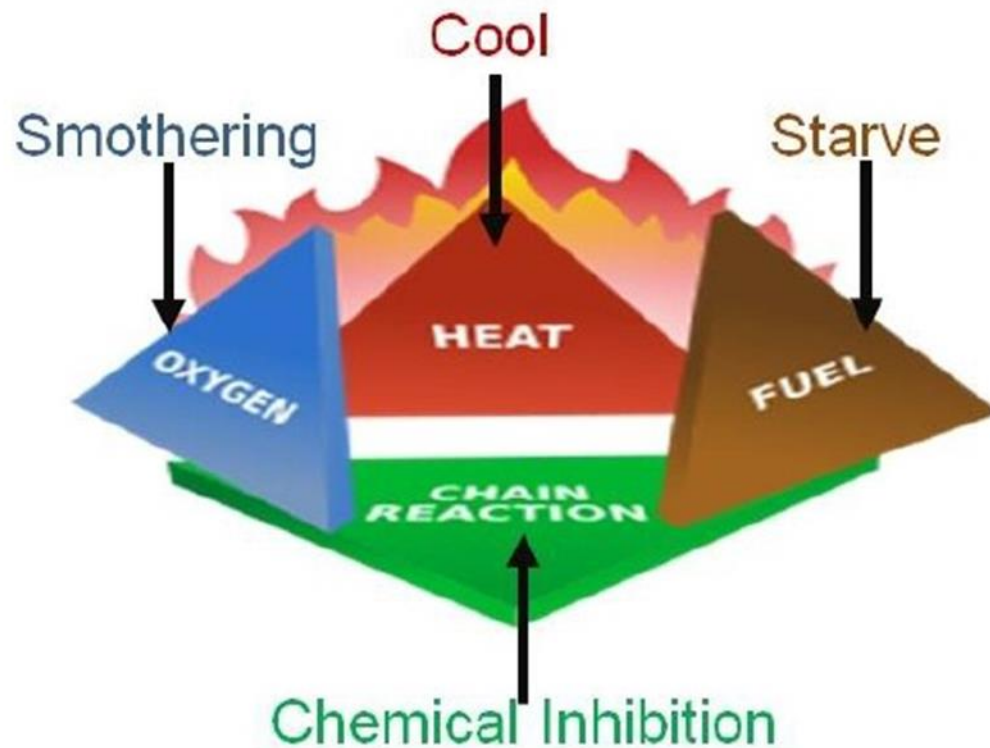


Chemistry of Fire

- **Causes of Fire**
 - Smoking
 - Open Flames
 - Sparks
 - Electricity
 - Heating/Cooking Appliances
 - Friction Heat
 - Static Electrical Discharges
 - Chemical Reactions

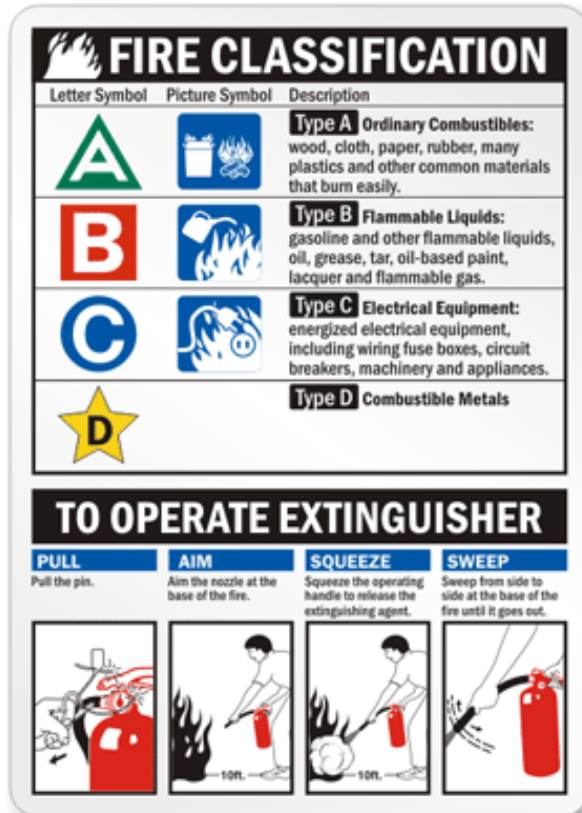


Methods of Extinguishing



- **Remove all oxygen**
- **Remove the fuel**
- **Remove the heat**
- **Chemically interfere with the reaction**

First Response Fire Fighting Equipment



Classification of Fires

Class A Combustible Solids	Class B Flammable Liquids	Class C Flammable Gases	Class D Combustible Metals	Class (E) Electrical Hazards	Class F Cooking Oils and Fats
Wood Paper Furniture Bedding Carbonaceous material	Flammable liquids: * Petrol * Oil * Kerosene * Paint * Thinners	Flammable gases: * Propane * Butane * Acetylene	Combustible metals: * Magnesium * Lithium * Titanium * Zinc * Uranium	Fires involving live electrical current	Cooking oils and fats

Select the Correct Extinguisher



Powder



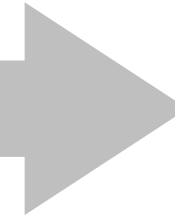
CO2



Blanket



Hose Reel



Dry Chemical Powder



Dry Chemical Powder Extinguisher

- Contains a chemical powder.
- Expected duration is approximately 10-45 seconds dependent on size.
- There are two types, A, B (E) and B (E)
- Method of extinction - chemical inhibition.
- Warning - A, B, (E) type must not be used for F class fires.

Carbon Dioxide



CO² (Carbon Dioxide) Extinguisher

- Red body with black band.
- Contains compressed CO² in a liquid form.
- Expected duration is approximately 10-20 seconds dependent on size.
- Used on B,C,(E) & F class fires.
- Method of extinction - smothering.

Fire Blankets



Fire Hose Reels

Hose reels must be manned by two people, one to run out the nozzle and the second person to feed the hose off the reel.

If you are by yourself don't consider using a hose reel, the risk of a hose reel malfunction is too great.

Use valuable time to raise the alarm and commence evacuation of occupants from the immediate area.

Let the professional fire fighters use the installed hose reels to contain and extinguish the fire.



Evacuation

- ***Ensure you follow these procedures in the event of a fire or evacuation***
 - Be familiar with your work areas and the locations of the Emergency Exits.
 - Know the location of all fire equipment.
 - Know the evacuation procedures and Emergency Assembly Areas.
 - Respond to all evacuation alarms as planned even if you think it is a false alarm or the annual fire drill.
 - Follow the directions of Chief and Emergency Wardens.
 - Report all fires and other serious incidents as per the Evacuation Plan

Evacuation

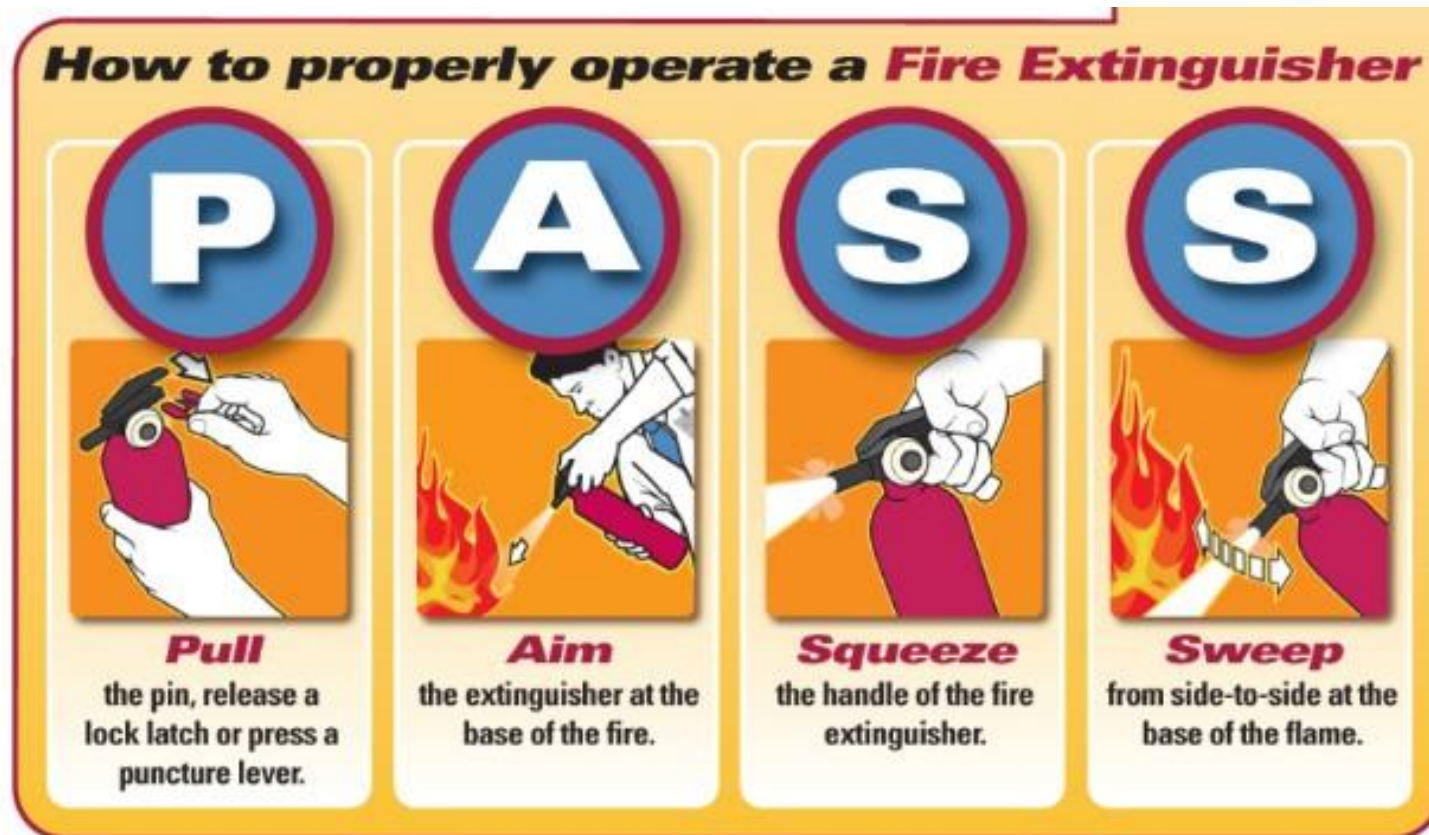
There are **four** essential steps to take if you discover a fire:

			
R	A	C	E
Rescue anyone in immediate danger of the fire.	Alarm Activate the nearest fire alarm and call your fire response telephone number.	Contain fire by closing all doors in the fire area.	Extinguish small fires. If the fire cannot be extinguished, leave the area and close the door.

You should know:

- Locations of nearest fire extinguishers and alarm pull boxes
- The fire location - room number and building
- All fire exits in your work area

Evacuation



Fire Prevention

- **Housekeeping**

- Emergency Exit routes and stairways, **MUST BE KEPT CLEAR** of loose or moveable items including, wheelie bins, chairs, and tables etc.
- No items are to be stored in the fire stairs.
- Never store **ANY** item other than fire equipment in the fire hose cupboards and within **ONE** meter of any fire equipment item.
- Avoid build up of combustible waste such as paper, cardboard polystyrene and wooden crates etc in the office areas and exit routes.



FIRE PREVENTION

Keep Access To Fire
Equipment Clear



FIRE **PREVENTION**

Keep Passageways Clear

References



1. Emergency Plans – Fact Sheet
2. Model Code of Practice Managing the Work Environment

Please ensure that
your training
session is finalised
by completing the
questionnaire in
the link below





ISO14001
CERTIFICATION